



TEXAS TECH UNIVERSITY SYSTEM™

Texas Tech University

Approve appointments with tenure:

Alexandre Rocateli, Ph.D.

Kenneth Williams, J.D.





TEXAS TECH UNIVERSITY SYSTEM™

Texas Tech University

**Approve termed-naming of the Immigration Clinic within the
School of Law**

Presenters: Patrick Kramer & Dean Jack Nowlin



Recommendation

- The president recommends and the chancellor concurs that the Board of Regents approve naming the newly established Immigration Law Clinic for a period of five (5) years, within the School of Law, the “Jim and Leah Finley Immigration Law Clinic,” in honor and recognition of a generous donation from Jim and Leah Finley.





TEXAS TECH UNIVERSITY SYSTEM™

GIVE WEST TEXANS A FIGHTING CHANCE TO SURVIVE CANCER

*Comprehensive Cancer Center:
Achieving National Cancer Institute Designation*

Lance R. McMahon, Ph.D.

Senior Vice President for Research and Innovation

Thomas E. Hutson, D.O., Pharm.D., Ph.D.

TTUHSC School of Medicine Professor of Internal Medicine
Division Chief, Hematology Oncology
Director, UMC Cancer Center

TEXAS TECH UNIVERSITY  HEALTH SCIENCES CENTER™

TODAY'S AGENDA:

1. Understanding the Role of NCI in Cancer Care
2. Addressing Cancer Needs in West Texas
3. Pathway to NCI Designation
4. Our Vision and Partnerships for Impact

WHAT IS THE NATIONAL CANCER INSTITUTE (NCI)?

- **Role in the NIH:** NCI drives national cancer research and improves patient outcomes
- **Top Cancer Research Funder:** NCI is the nation's leading source of cancer research funding
- **Health Care Impact:** NCI funding expands clinical trials, advances therapies, and sets standards for quality cancer care
- **Community Benefits:** NCI programs bring advanced cancer care to underserved regions, reducing disparities and improving public health

NCI IMPACT IN 2022

\$6.72B
budget



Serving
2,500
institutions



Supporting
60,000+
grants



Benefitting
300,000
researchers

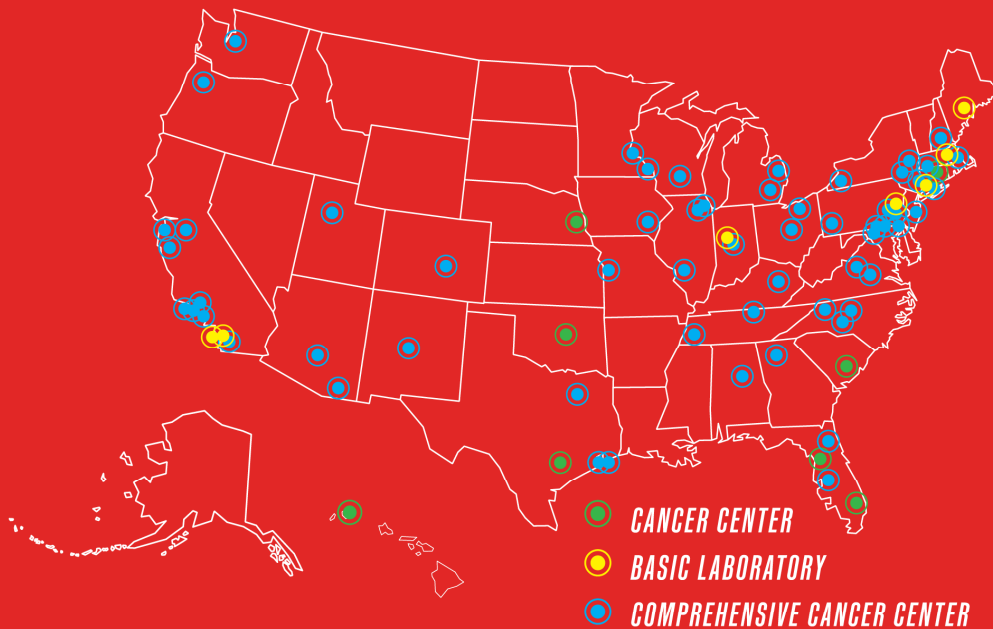


WHY SHOULD NCI MATTER TO YOU?

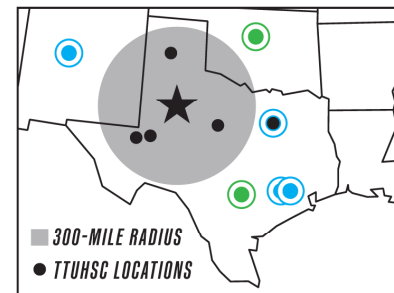
- **Better Access to Care:** Brings advanced treatments closer to home.
- **Expanded Clinical Trials:** Provides West Texans with more options for cutting-edge treatments.
- **Higher Standards of Care:** Ensures top-tier, research-backed cancer care in the region.
- **Community Health Impact:** Addresses regional health disparities with targeted interventions.
- **Economic Growth:** Drives local job creation, partnerships, and attracts health care talent.
- **Stronger Local Resources:** Enhances TTUHSC's capacity to serve West Texas communities.

IMPORTANCE NCI BRINGS TO REGION

NCI-DESIGNATED CANCER CENTER IN U.S.



- **Improved Access:**
Reduces travel for advanced cancer care and treatments.
- **Addressing Disparities:**
Targets high cancer rates and improves screening access.
- **Enhanced Care Options:**
Brings clinical trials and innovative treatments to the region



Congress tasked the NCI with having a NCI-Designated Cancer Center within 300 miles of every American

West Texas cancer patients do not have access to a NCI-Designated Cancer Center within a 300-mile radius

TEXAS TECH UNIVERSITY



HEALTH SCIENCES CENTER™

WEST TEXAS CANCER DISPARITIES

HIGH CANCER RATES

Higher cancer rates, especially among Hispanic populations, reveal serious gaps in health care access and prevention

HIGH RISK POPULATIONS

Large Hispanic and low-income groups face unique barriers, with 22% of rural Texans uninsured—resulting in missed screenings and higher cancer mortality

HIGHER RURAL CANCER MORTALITY

Rural patients are 5% more likely to die from cancer than urban patients due to late diagnoses and limited access to specialized care

Limited provider access, funding, and NCI centers leave rural West Texans without clinical trials and specialized oncology care, worsening cancer outcomes

LIMITED ACCESS TO CLINICAL TRIALS

LATE DIAGNOSES & TREATMENT GAPS

Limited access to primary and cancer care providers, along with long travel distances, results in delays in receiving timely cancer treatment

TARGETED CANCER SCREENING, EARLY DIAGNOSIS, AND INTEGRATED TREATMENT AND CARE IS CRUCIAL FOR IMPROVING HEALTH OUTCOMES IN RURAL WEST TEXAS.

TEXAS TECH UNIVERSITY  HEALTH SCIENCES CENTER™

WHAT DOES IT TAKE TO ACHIEVE NCI DESIGNATION?

- **Strong Research Infrastructure:** Develop advanced 100,000 sq. ft. cancer research facilities.
- **Scientific Excellence:** Build impactful cancer research programs; secure \$10M in NCI funding.
- **Comprehensive Cancer Care Programs:** Create multidisciplinary teams; expand trials, patient support, and facilities.
- **Community Engagement and Outreach:** Build community partnerships; enhance access, education, and health equity.
- **Leadership and Administrative Support:** Establish visionary leadership; foster innovation, infrastructure, and effective coordination.
- **Sustainable Funding and Financial Investment:** Secure diverse funding; ensure support for stable, long-term growth.
- **Demonstrated Impact and Outcomes:** Track success metrics; ensure excellence and continuous improvement.

CURRENT CANCER INFRASTRUCTURE: BUILDING ON OUR FOUNDATION

- **School of Medicine Cancer Center:** Serves as the main research hub, with \$36M in active funding and \$80M awarded over 16 years.
- **Clinical Oncology Program:** Our main clinical partner program with UMC Lubbock, specializes in breast, pediatric, and urologic cancer care.
- **Shared Resources Program:** Supports research with lab analysis, pharmacology, and data services. Located in Lubbock, Amarillo, and Dallas.
- **Cancer Biology Program:** Focuses on studying cancer at the molecular level to advance new treatments. Located in Lubbock and Amarillo.
- **Developmental Therapeutics Program:** Develops novel therapies for immunotherapy, pediatric, and urothelial cancers. Locations include Lubbock, Abilene, Amarillo, and Dallas.
- **Cancer Prevention Program:** Focused on prevention and early detection, with emphasis on breast, colon, and lung cancers in underserved areas like the Permian Basin. Based in Lubbock, Abilene, and Dallas.



CREATING A UNIFIED COMPREHENSIVE CANCER PROGRAM

*EARLY DETECTION
AND PREVENTION*

CANCER
PREVENTION
PROGRAM

*RESEARCH AND
DATA ANALYTICS*

CANCER BIOLOGY
PROGRAM
DEVELOPMENTAL
THERAPEUTICS
PROGRAM

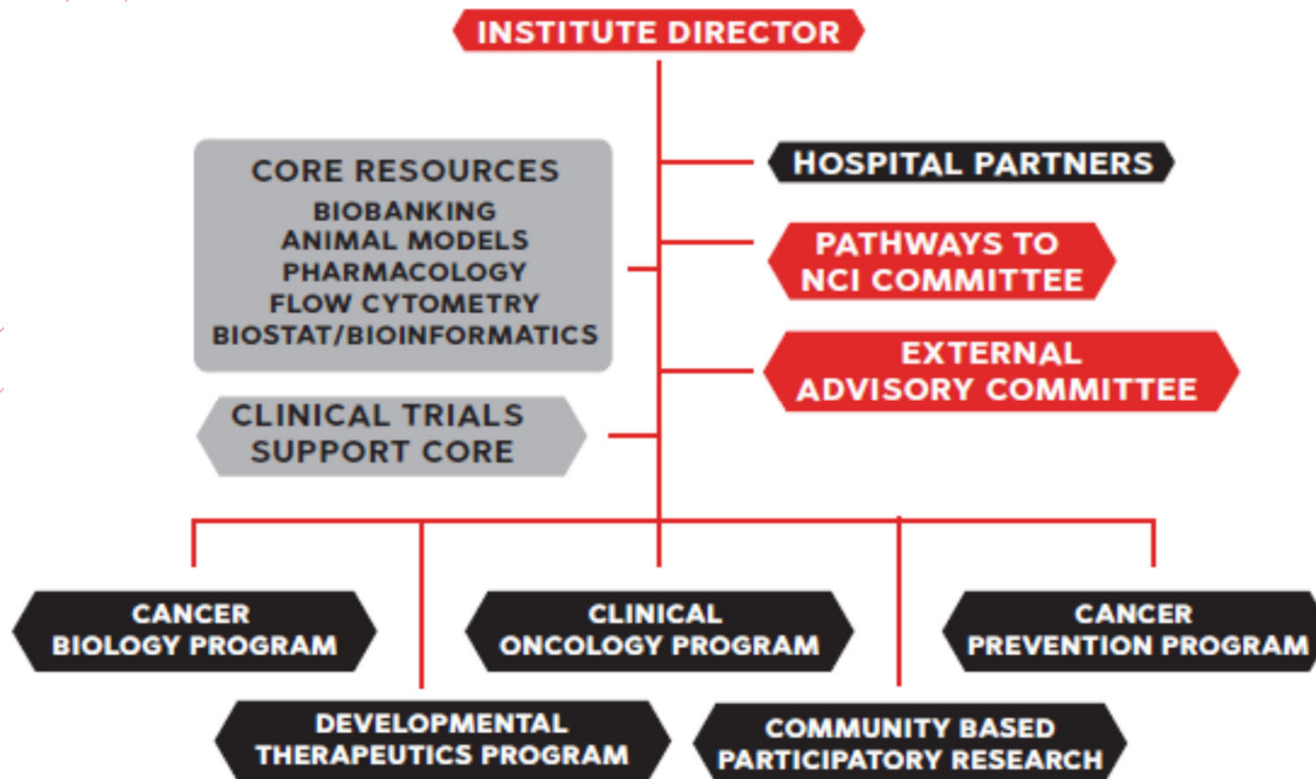
*INTEGRATED
TREATMENT AND CARE*

CLINICAL
ONCOLOGY
PROGRAM
COMMUNITY-BASED
PARTICIPATORY
RESEARCH



TEXAS TECH UNIVERSITY
HEALTH SCIENCES CENTER™

TTUHSC'S PLAN FOR UNIFYING CANCER PROGRAMS



PARTNERING IN OUR MISSION TO COMBAT CANCER

- Support TTUHSC's Legislative Appropriations Request, Rural Cancer Collaborative, to build infrastructure and advance the Pathway to NCI
- Strengthen partnership with UMC Lubbock to expand advanced cancer care for the West Texas region
- Expand regional partnerships to support comprehensive, regionalized cancer care
- Encourage outreach to professional health care associations, community organizations, and legislators to secure resources for rural cancer initiatives